

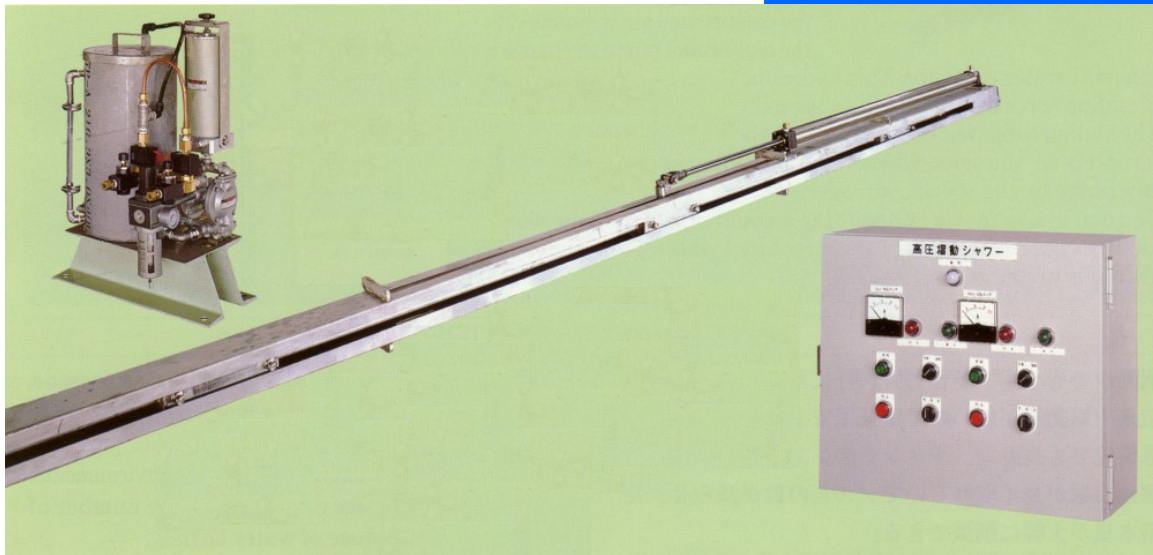
TAIZEN NEW SUPER-JET

HIGH PRESSURE SLIDING SHOWER

Patent Pending

In the paper industry, diverse rules and standards have been proposed to assure safety in working environments. We have been delivering high reliable and safe products and systems suitable for the field use and operators with a motto of "Be friendly to a shop floor".

Renovated Driving System!
New Super Jet has come to the market.



An epoch hydraulic cylinder adopted as a driving unit.
A new type slid shower for the next generation with high reliability and safety.

Application

- ◎ Mesh washing
- ◎ Felt washing
- ◎ Canvas washing and various other services



TAIZEN CO., LTD.
TAIZEN TECHNICAL R&D LAB INC.

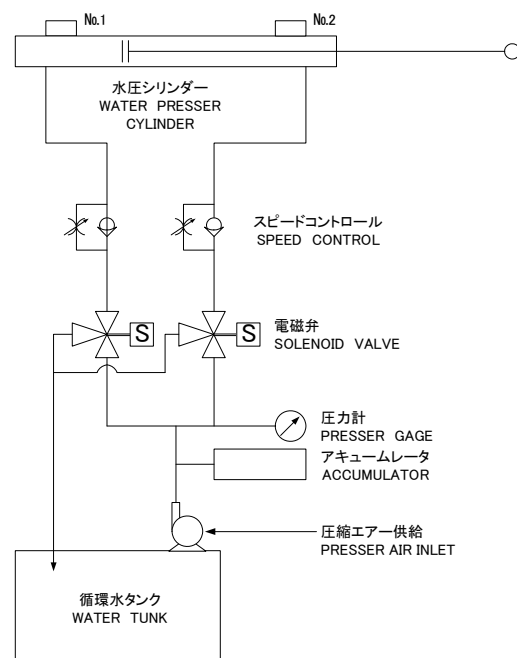
TAIZEN HIGH PRESSURE SLIDING SHOWER NEW SUPER-JET



No motors for the sliding device are used. A very small amount of the compressed air is supplied to the diaphragm pump to change a constant water pressure. This hydraulic power becomes a source of sliding force by supplying to the cylinder.

The sliding direction is exchanged to the front and rear sides alternately by the solenoid valves. The sliding speed can be set at any range by the speed controller.

You don't have to worry about the amount of water or the water quality control because of the circulated water. (The water for sliding is prepared by TAIZEN)



FEATURES

- Pipes don't go out of the sliding width to a passage.
- Less danger on the electric security because of no motors for sliding.
- Long life and less maintenance in hostile environments.
- Long sliding distance can diminish the number of nozzles and the volume of water largely.
- Less power consumption.
- Uniform hydraulic is applied to each nozzle even in a large area.
- Various pumps and nozzles are available for the uses of devices. (Shower water pumps are also available.)

 **TAIZEN CO., LTD.**
TAIZEN TECHNICAL R&D LAB INC.

496-1 DENBO FUJI-CITY SHIZUOKA-PREF

417-0061 JAPAN

PHONE 0545(22)5955

FAX 0545(22)5956

e-mail : info@taizen-co.jp

URL : <http://www.taizen-co.jp>